

Lely Astronaut

Central Unit

Central Control Box



Parts list

5.1005.8679.0 B

English Original





INTENTIONALLY BLANK

Preface

Applicability

| Type number: | As from serial number: |
|-----------------|------------------------|
| 5.1005.2XXX-XXX | 0003310703 |

Spare Parts

When ordering spare parts it is important that you are aware of the type and serial number of your machine. Use only genuine LELY parts.

Criticality

Criticality = Bulk, 0, 1, 2

- Bulk = Bulk item.
- 0 = Not critical.
- 1 = Not very critical.
- 2 = Critical.

Explanation of Signs Used in the Parts List

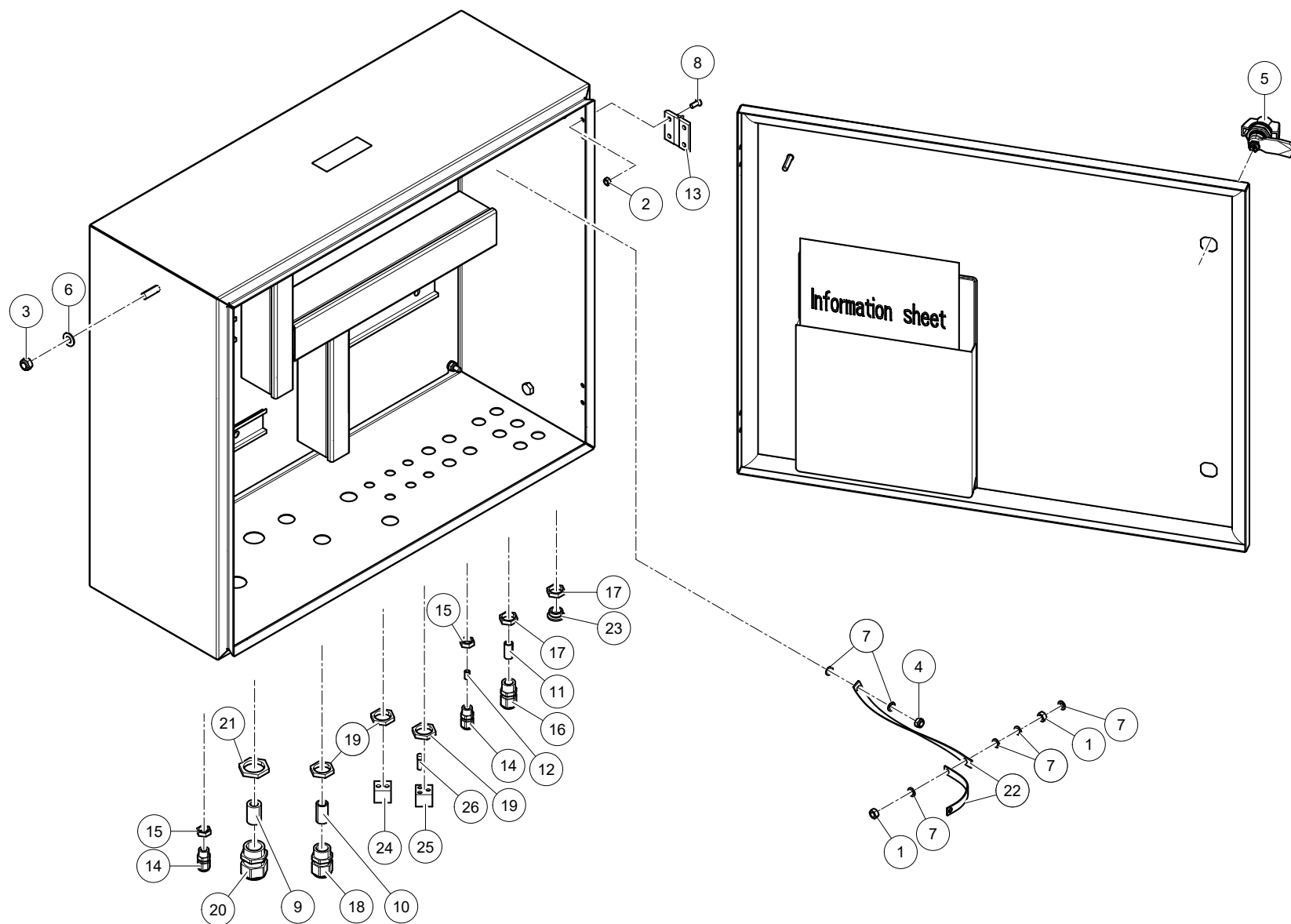
| | |
|------------|---|
| [R] / [RH] | By RH or LH version the position of the part is meant, seen from the rear of the machine. |
| [L] / [LH] | |
| [~] | E.g.: LH version is not similar to the RH version, which is actually shown. |
| [#] | Not available separately. |



INTENTIONALLY BLANK

Table of Contents

| | | |
|----------|---------------------------------------|-----------|
| A | 3PhN 400/230VAC | 6 |
| A-1 | Cabinet | 6 |
| A-2 | Cover | 8 |
| A-3 | Components (3PhN 400/230VAC) | 10 |
| A-4 | General Components | 12 |
| B | 3Ph 200/230VAC | 14 |
| B-1 | Cabinet | 14 |
| B-2 | Cover | 16 |
| B-3 | Components (3Ph 200/230VAC) | 18 |
| B-4 | General Components | 20 |
| C | 2Ph 240VAC / 1Ph 230VAC | 22 |
| C-1 | Cabinet | 22 |
| C-2 | Cover | 24 |
| C-3 | Components (2Ph 240VAC / 1Ph 230 VAC) | 26 |
| C-4 | General Components | 28 |
| C-5 | Chain (Keyholder) | 30 |

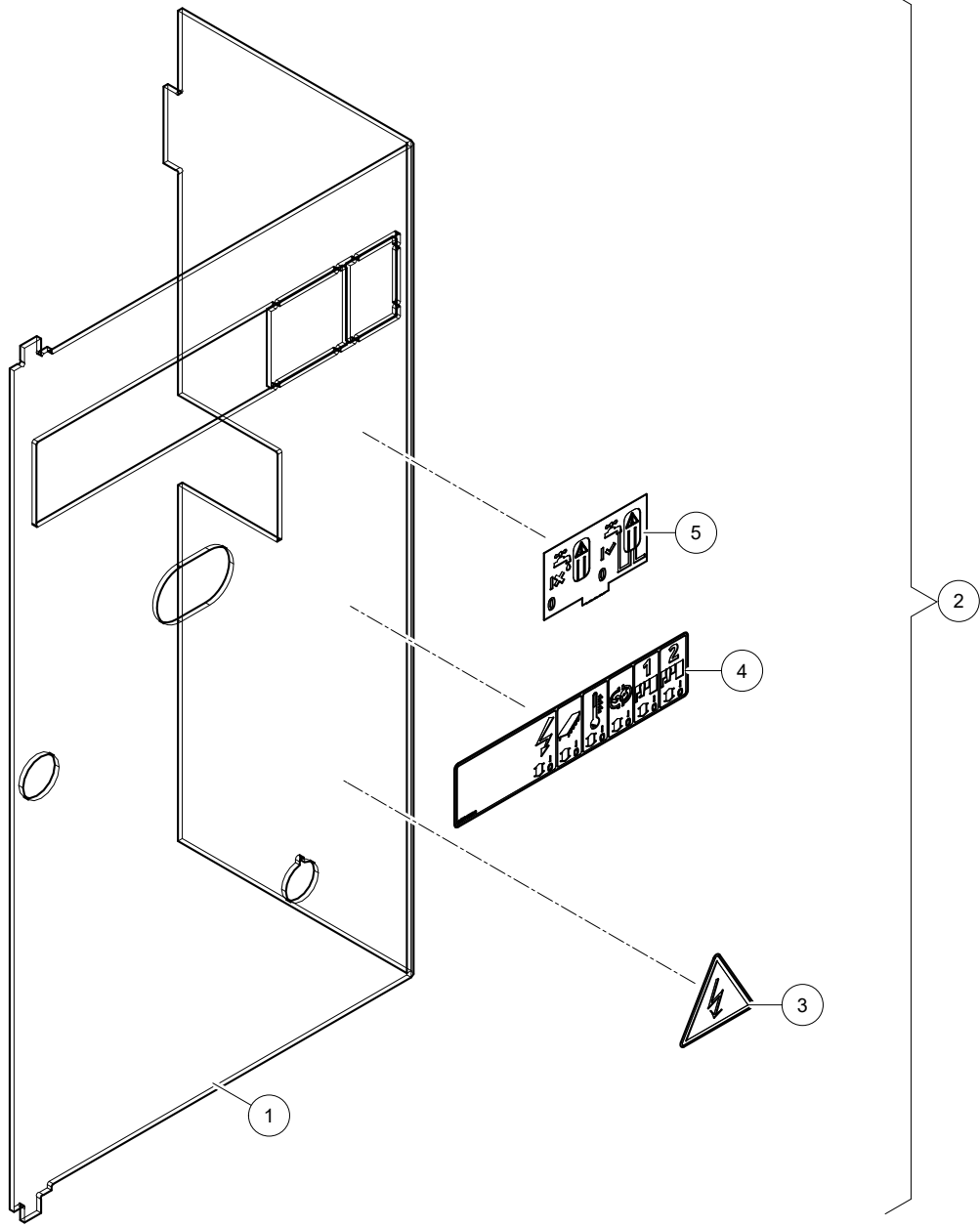


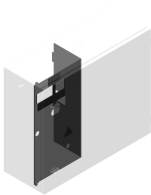
Astronaut Central
UnitCentral Control
Box

5.1005.2XXX-XXX

0003310703

| Ref. | Part No | Qty. | Description | Techn. info | Criticality | Remark |
|------|---------------|------|-------------------|--------------------|-------------|--------|
| 1 | 9.1029.0026.4 | 4 | Nut | M6 DIN934-A2-2 s/s | | |
| 2 | 9.1029.0042.6 | 4 | Nut | M5 DIN934-A2-2 s/s | | |
| 3 | 9.1030.0020.4 | 3 | Nut | M8 DIN985-A2-2 s/s | | |
| 4 | 9.1030.0021.5 | 2 | Nut | M6 DIN985-A2-2 s/s | | |
| 5 | 9.1039.0039.0 | 2 | Nokvergrendeling | | | |
| 6 | 9.1048.0050.2 | 3 | Washer | A8.4 DIN125-A2 s/s | | |
| 7 | 9.1051.0006.4 | 9 | Serr. lock washer | A6.4 DIN6798 s/s | | |
| 8 | 9.1060.0044.5 | 4 | Screw | M5x10 s/s | | |
| 9 | ##### | 1 | Not separately | | | |
| 10 | ##### | 2 | Not separately | | | |
| 11 | ##### | 4 | Not separately | | | |
| 12 | ##### | 4 | Not separately | | | |
| 13 | 9.1185.0800.1 | 1 | Hinge | | | |
| 14 | 9.1186.0244.2 | 7 | Swivel | M12x1.5 | | |
| 15 | 9.1186.0245.3 | 7 | Swivel nut | M12X1.5 (EMC) | | |
| 16 | 9.1186.0246.4 | 8 | Cable gland | | | |
| 17 | 9.1186.0247.5 | 11 | Cable gland nut | | | |
| 18 | 9.1186.0248.6 | 2 | Cable gland | M20x1.5 | | |
| 19 | 9.1186.0249.0 | 4 | Swivel nut | M20x1.5 | | |
| 20 | 9.1186.0250.1 | 2 | Swivel | M25x1.5 | | |
| 21 | 9.1186.0251.2 | 2 | Lock nut | M25x1.5 | | |
| 22 | ##### | 2 | Not separately | | | |
| 23 | 9.1186.0814.0 | 3 | Blind Swivel | M16 | | |
| 24 | 9.1186.1171.0 | 1 | Seal | Seal 2X5-6 GR | | |
| 25 | 9.1186.1172.0 | 1 | Seal | 3X5 GR | | |
| 26 | 9.1186.1173.0 | 1 | Sealing plug | 5mm | | |





Astronaut Central Unit

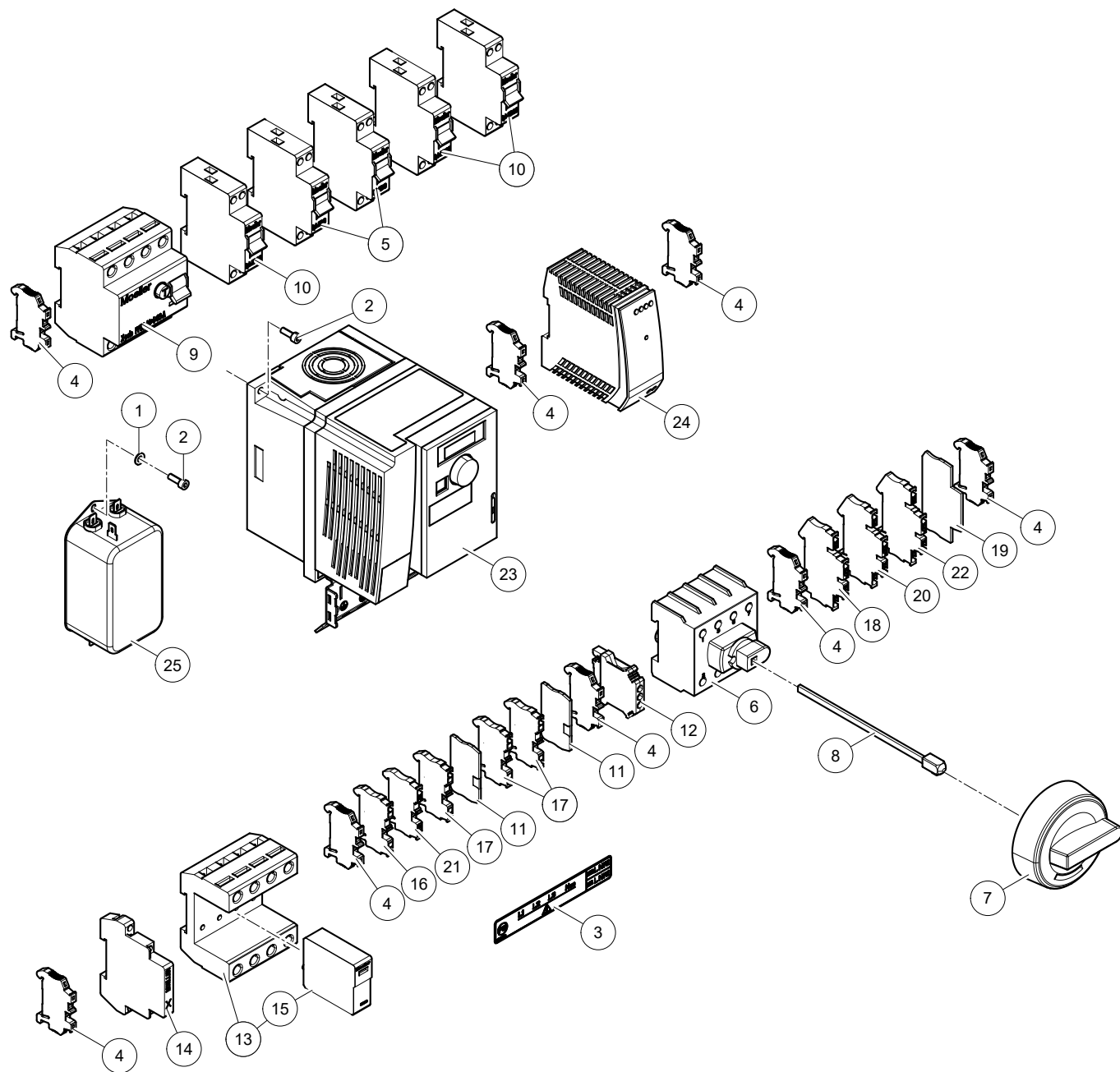
Central Control Box

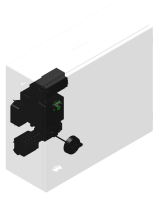
5.1005.2XXX-XXX

0003310703

| Ref. | Part No | Qty. | Description | Techn. info | Criticality | Remark |
|------|---------------|------|----------------|-----------------------|-------------|--------|
| 1 | ##### | 1 | Not separately | | | |
| 2 | 5.1005.5613.0 | 1 | Cover | High voltage (EU) | | |
| 3 | 9.1170.0928.0 | 1 | Decal | "High voltage hazard" | | |
| 4 | 9.1170.0996.0 | 1 | Etiket | | | |
| 5 | 9.1170.1813.0 | 1 | Label | CU-2.1 BOILER FILL | | |



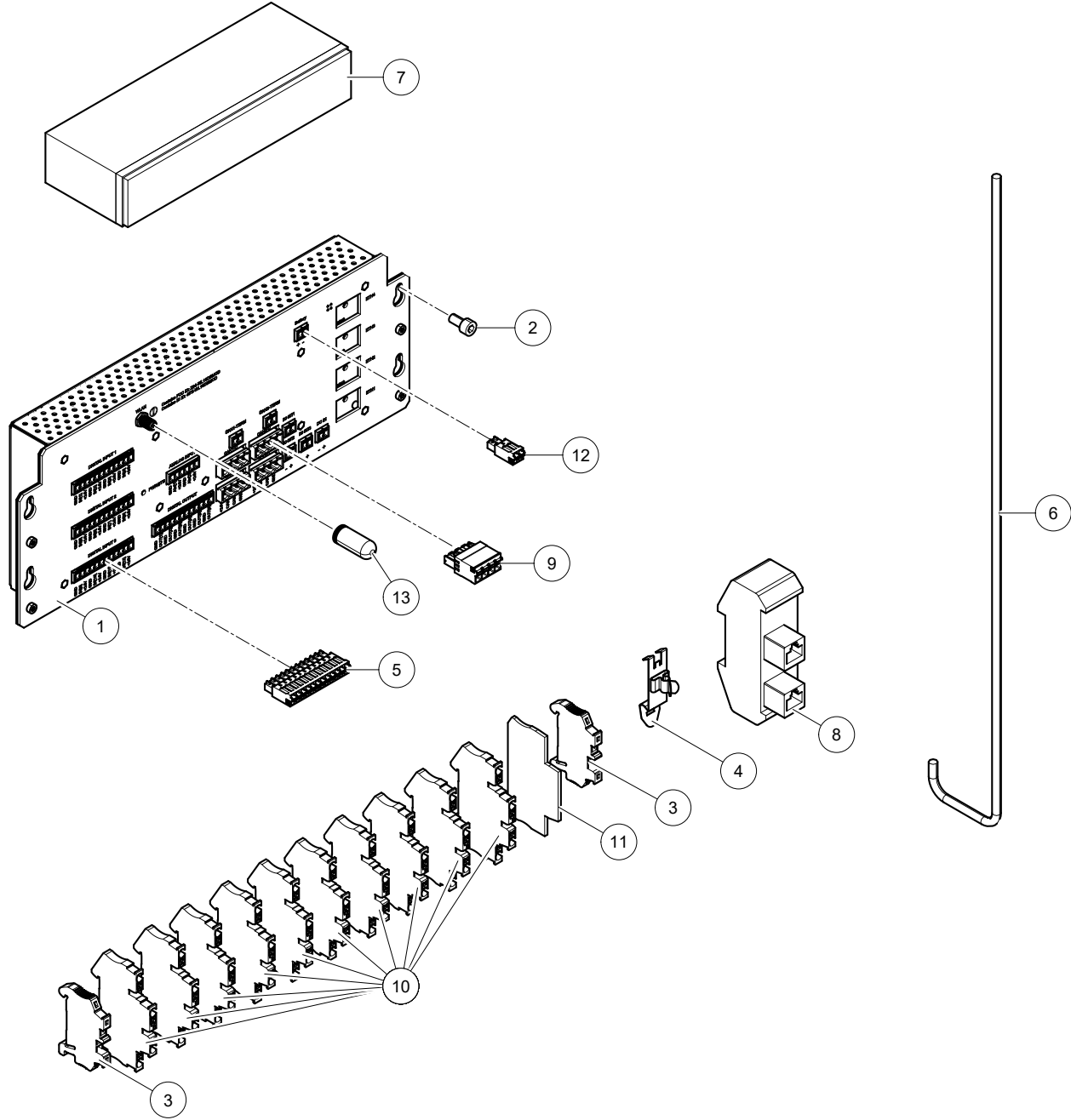


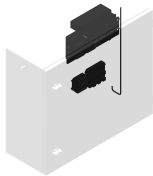
Astronaut Central
UnitCentral Control
Box

5.1005.2XXX-XXX

0003310703

| Ref. | Part No | Qty. | Description | Techn. info | Criticality | Remark |
|------|---------------|------|-------------------------------|----------------------------|-------------|--------|
| 1 | 9.1048.0089.6 | 2 | Washer | A4.3 DIN125-A2 s/s | | |
| 2 | 9.1057.0160.5 | 4 | Screw | M4x12 DIN912 s/s | | |
| 3 | ##### | 1 | Not separately | | | |
| 4 | 9.1185.0840.6 | 9 | End bracket | | | |
| 5 | 9.1185.0849.1 | 2 | Automatic circuit breaker | PLN6-C16/1N | | |
| 6 | 9.1185.0999.0 | 1 | Switch | | | |
| 7 | 9.1185.1001.0 | 1 | Switch | | | |
| 8 | 9.1185.1002.0 | 1 | Shaft | L=128mm | | |
| 9 | 9.1186.0405.2 | 1 | Earth leakage circuit breaker | PFIM-40/4/03-A | | |
| 10 | 9.1186.0408.5 | 3 | Automatic circuit breaker | PLN6-C10/1N | | |
| 11 | ##### | 2 | Not separately | | | |
| 12 | ##### | 1 | Not separately | | | |
| 13 | 9.1190.0679.0 | 1 | Surge protection Device | | | |
| 14 | 9.1190.0680.0 | 1 | Switch | | | |
| 15 | 9.1190.0760.0 | 4 | Surge protect unit | | | |
| 16 | 9.1190.2066.0 | 1 | Terminal PT 2,5 | | | |
| 17 | 9.1190.2069.0 | 3 | Terminal PT 2,5-PE | | | |
| 18 | 9.1190.2154.0 | 1 | Terminal | | | |
| 19 | ##### | 1 | Not separately | D-PTTB 2 | | |
| 20 | 9.1190.2157.0 | 1 | Double-level terminal block - | PTTB 2,5 BU | | |
| 21 | 9.1190.2158.0 | 1 | Feed-through terminal block - | PT 2,5 BU | | |
| 22 | 9.1190.2159.0 | 1 | Protective terminal block | Double level - PTTB 2,5-PE | | |
| 23 | 9.1190.7814.0 | 1 | Electrical control | ATV320U15M2C | | |
| 24 | 9.1190.8001.0 | 1 | Power source | UNO_PS_1AC_24DC_60W | | |
| 25 | 9.1190.9706.0 | 1 | Electronics | EMI FILTER | | |

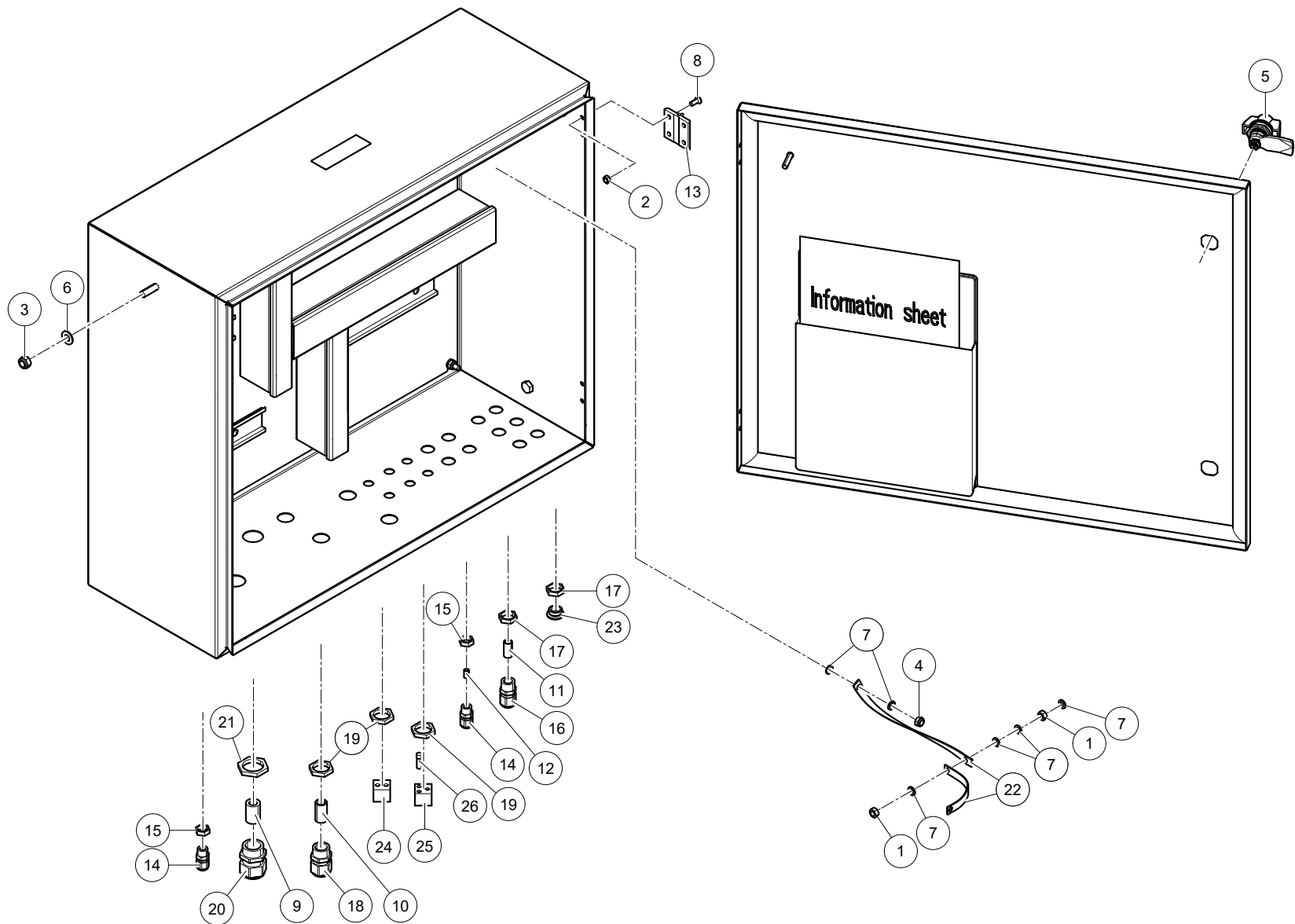




Astronaut Central Unit Central Control Box 5.1005.2XXX-XXX 0003310703

| Ref. | Part No | Qty. | Description | Techn. info | Criticality | Remark |
|------|---------------|------|-------------------------------|----------------------------------|-------------|--------|
| 1 | 6.2001.0282.0 | 1 | Control box | CRS M3 | | |
| 2 | 9.1057.0053.3 | 4 | S.h. bolt | M5x10 DIN912 s/s | | |
| 3 | 9.1185.0840.6 | 2 | End bracket | | | |
| 4 | ##### | 1 | Not separately | | | |
| 5 | 9.1186.0709.0 | 3 | Connector | 8 pole | | |
| 6 | 9.1190.0026.0 | 3 | Patch cable | RJ45 cat5e UTP 0.5m | | |
| 7 | 9.1190.0048.0 | 1 | Battery | | | |
| 8 | 9.1190.0452.0 | 3 | Connection Module | Type 2, RJ45 | | |
| 9 | 9.1190.0817.0 | 1 | Connector FKCN 2,5/ 4-ST-5,08 | | | |
| 10 | 9.1190.2154.0 | 10 | Terminal | | | |
| 11 | ##### | 1 | Not separately | D-PTTB 2 | | |
| 12 | 9.1190.2222.0 | 5 | Connector FMC 1,5/ 2-ST-3,81 | | | |
| 13 | 9.1190.5023.0 | 1 | Antenna | Single Band 2,4 WiFi RP-SMA-Male | | |



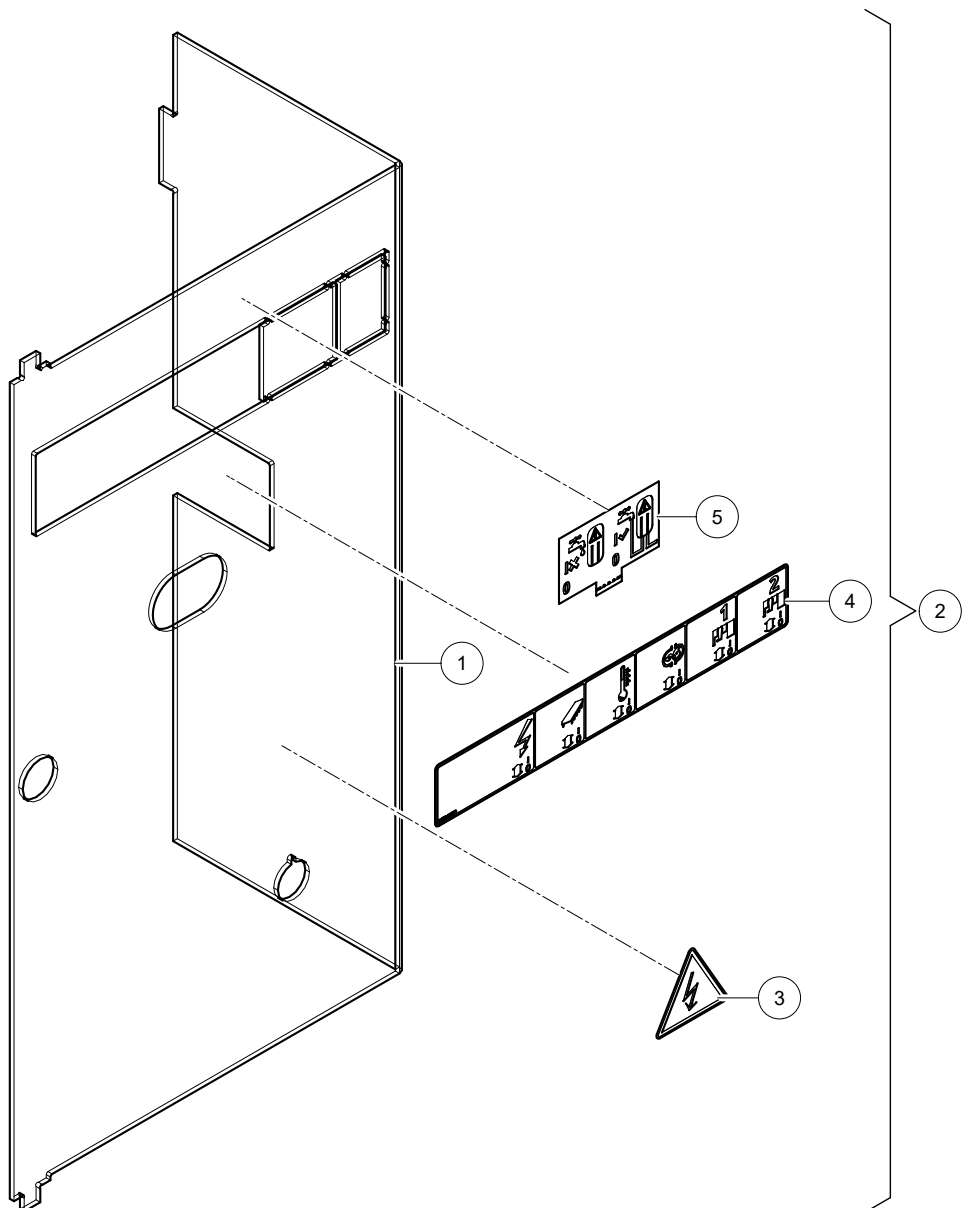


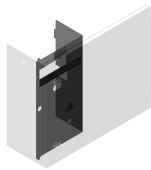


Astronaut Central Unit Central Control Box 5.1005.2XXX-XXX 0003310703

| Ref. | Part No | Qty. | Description | Techn. info | Criticality | Remark |
|------|---------------|------|-------------------|--------------------|-------------|--------|
| 1 | 9.1029.0026.4 | 4 | Nut | M6 DIN934-A2-2 s/s | | |
| 2 | 9.1029.0042.6 | 4 | Nut | M5 DIN934-A2-2 s/s | | |
| 3 | 9.1030.0020.4 | 3 | Nut | M8 DIN985-A2-2 s/s | | |
| 4 | 9.1030.0021.5 | 2 | Nut | M6 DIN985-A2-2 s/s | | |
| 5 | 9.1039.0039.0 | 2 | Nokvergrendeling | | | |
| 6 | 9.1048.0050.2 | 3 | Washer | A8.4 DIN125-A2 s/s | | |
| 7 | 9.1051.0006.4 | 9 | Serr. lock washer | A6.4 DIN6798 s/s | | |
| 8 | 9.1060.0044.5 | 4 | Screw | M5x10 s/s | | |
| 9 | ##### | 1 | Not separately | | | |
| 10 | ##### | 2 | Not separately | | | |
| 11 | ##### | 4 | Not separately | | | |
| 12 | ##### | 4 | Not separately | | | |
| 13 | 9.1185.0800.1 | 1 | Hinge | | | |
| 14 | 9.1186.0244.2 | 7 | Swivel | M12x1.5 | | |
| 15 | 9.1186.0245.3 | 7 | Swivel nut | M12X1.5 (EMC) | | |
| 16 | 9.1186.0246.4 | 8 | Cable gland | | | |
| 17 | 9.1186.0247.5 | 11 | Cable gland nut | | | |
| 18 | 9.1186.0248.6 | 2 | Cable gland | M20x1.5 | | |
| 19 | 9.1186.0249.0 | 4 | Swivel nut | M20x1.5 | | |
| 20 | 9.1186.0250.1 | 2 | Swivel | M25x1.5 | | |
| 21 | 9.1186.0251.2 | 2 | Lock nut | M25x1.5 | | |
| 22 | ##### | 2 | Not separately | | | |
| 23 | 9.1186.0814.0 | 3 | Blind Swivel | M16 | | |
| 24 | 9.1186.1171.0 | 1 | Seal | Seal 2X5-6 GR | | |
| 25 | 9.1186.1172.0 | 1 | Seal | 3X5 GR | | |
| 26 | 9.1186.1173.0 | 1 | Sealing plug | 5mm | | |



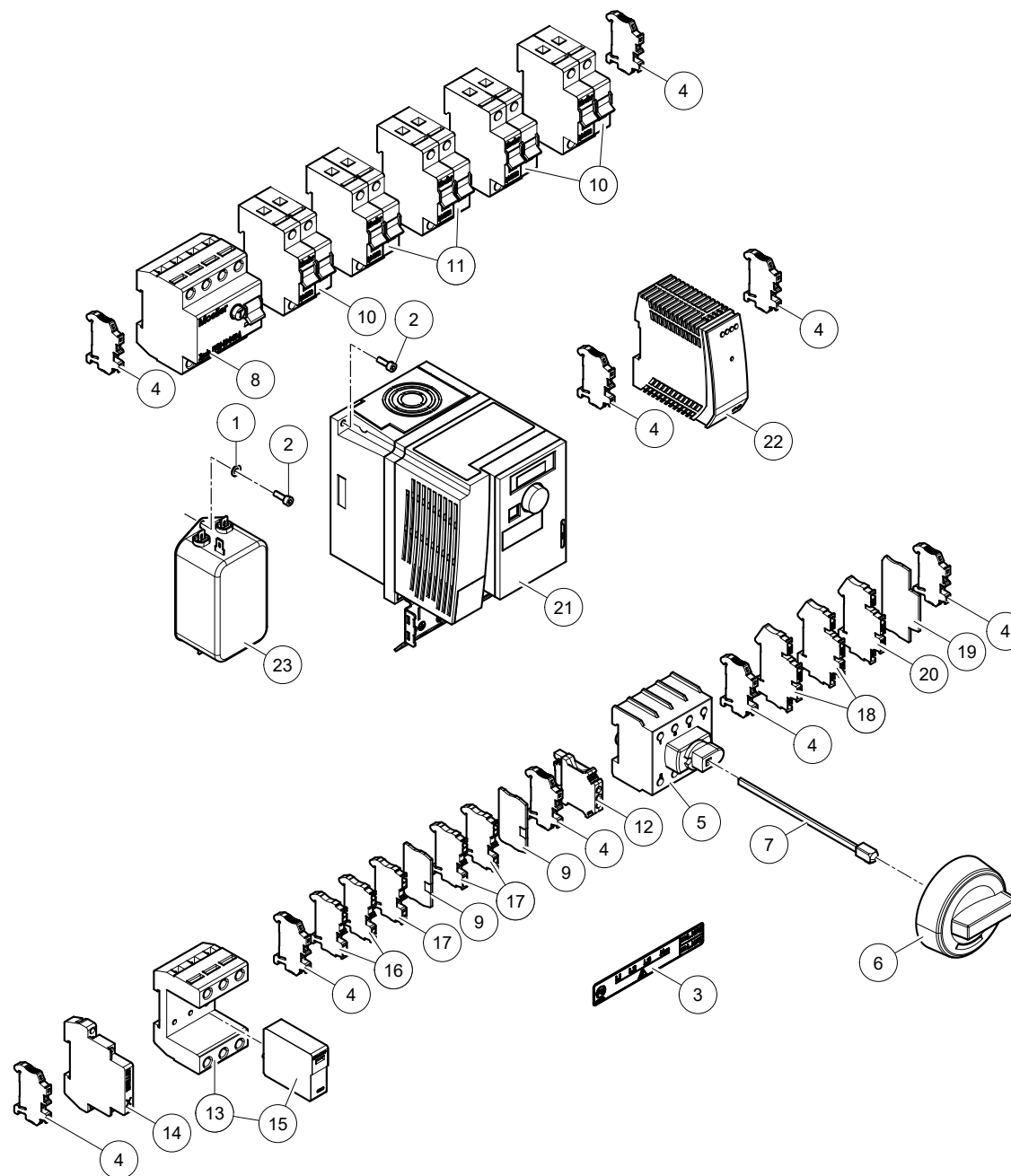


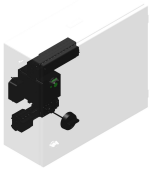


Astronaut Central Unit Central Control Box 5.1005.2XXX-XXX 0003310703

| Ref. | Part No | Qty. | Description | Techn. info | Criticality | Remark |
|------|---------------|------|----------------|-----------------------|-------------|--------|
| 1 | ##### | 1 | Not separately | | | |
| 2 | 5.1005.5611.0 | 1 | Cover | High Voltage (JP) | | |
| 3 | 9.1170.0928.0 | 1 | Decal | "High voltage hazard" | | |
| 4 | 9.1170.0997.0 | 1 | Etiket | | | |
| 5 | 9.1170.1813.0 | 1 | Etiket | | | |



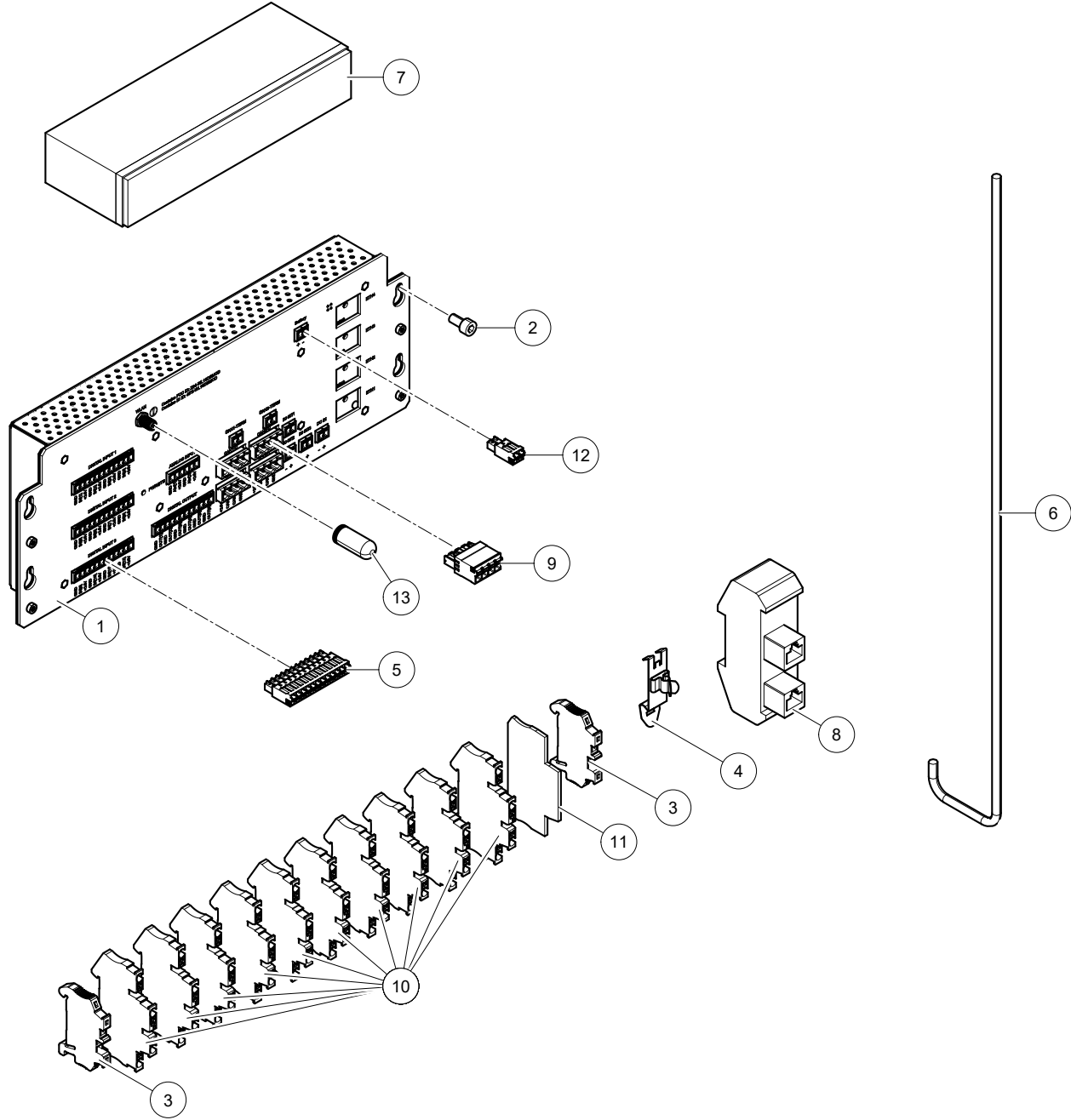


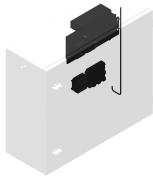
Astronaut Central
UnitCentral Control
Box

5.1005.2XXX-XXX

0003310703

| Ref. | Part No | Qty. | Description | Techn. info | Criticality | Remark |
|------|---------------|------|-------------------------------|----------------------------|-------------|--------|
| 1 | 9.1048.0089.6 | 2 | Washer | A4.3 DIN125-A2 s/s | | |
| 2 | 9.1057.0160.5 | 4 | Screw | M4x12 DIN912 s/s | | |
| 3 | ##### | 1 | Not separately | | | |
| 4 | 9.1185.0840.6 | 9 | End bracket | | | |
| 5 | 9.1185.0999.0 | 1 | Switch | | | |
| 6 | 9.1185.1001.0 | 1 | Switch | | | |
| 7 | 9.1185.1002.0 | 1 | Shaft | L=128mm | | |
| 8 | 9.1186.0405.2 | 1 | Earth leakage circuit breaker | PFIM-40/4/03-A | | |
| 9 | ##### | 2 | Not separately | | | |
| 10 | ##### | 3 | Not separately | | | |
| 11 | ##### | 2 | Not separately | | | |
| 12 | ##### | 1 | Not separately | | | |
| 13 | 9.1190.0678.0 | 1 | Surge protection device | | | |
| 14 | 9.1190.0680.0 | 1 | Switch | | | |
| 15 | 9.1190.0760.0 | 3 | Surge protect unit | | | |
| 16 | 9.1190.2066.0 | 2 | Terminal PT 2,5 | | | |
| 17 | 9.1190.2069.0 | 3 | Terminal PT 2,5-PE | | | |
| 18 | 9.1190.2154.0 | 2 | Terminal | | | |
| 19 | ##### | 1 | Not separately | D-PTTB 2 | | |
| 20 | 9.1190.2159.0 | 1 | Protective terminal block | Double level - PTTB 2,5-PE | | |
| 21 | 9.1190.7814.0 | 1 | Electrical control | ATV320U15M2C | | |
| 22 | 9.1190.8001.0 | 1 | Power source | UNO_PS_1AC_24DC_60W | | |
| 23 | 9.1190.9706.0 | 1 | Electronics | EMI FILTER | | |





Astronaut Central Unit

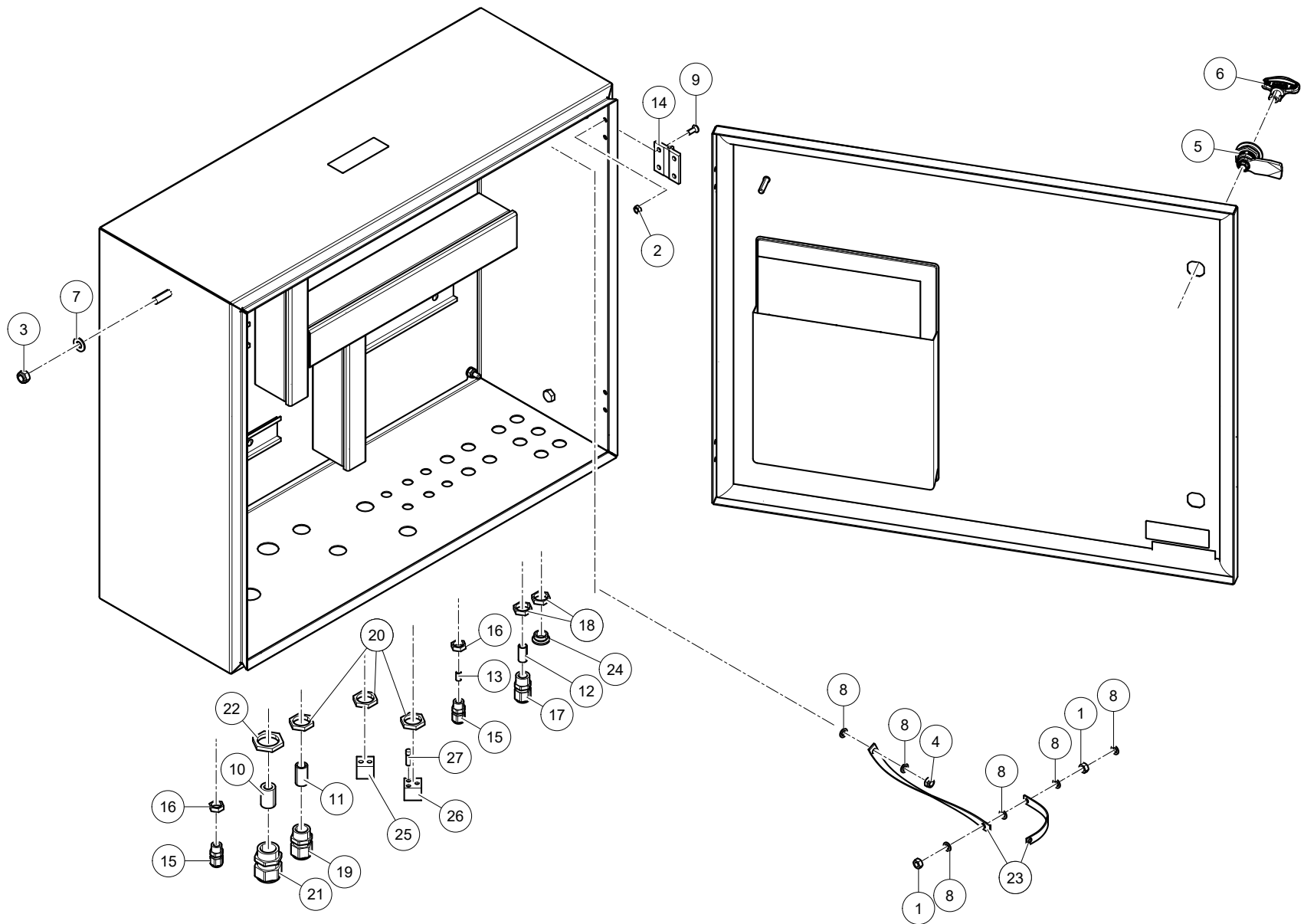
Central Control Box

5.1005.2XXX-XXX

0003310703

| Ref. | Part No | Qty. | Description | Techn. info | Criticality | Remark |
|------|---------------|------|-------------------------------|----------------------------------|-------------|--------|
| 1 | 6.2001.0282.0 | 1 | Control box | CRS M3 | | |
| 2 | 9.1057.0053.3 | 4 | S.h. bolt | M5x10 DIN912 s/s | | |
| 3 | 9.1185.0840.6 | 2 | End bracket | | | |
| 4 | ##### | 1 | Not separately | | | |
| 5 | 9.1186.0709.0 | 3 | Connector | 8 pole | | |
| 6 | 9.1190.0026.0 | 3 | Patch cable | RJ45 cat5e UTP 0.5m | | |
| 7 | 9.1190.0048.0 | 1 | Battery | | | |
| 8 | 9.1190.0452.0 | 3 | Connection Module | Type 2, RJ45 | | |
| 9 | 9.1190.0817.0 | 1 | Connector FKCN 2,5/ 4-ST-5,08 | | | |
| 10 | 9.1190.2154.0 | 10 | Terminal | | | |
| 11 | ##### | 1 | Not separately | D-PTTB 2 | | |
| 12 | 9.1190.2222.0 | 5 | Connector FMC 1,5/ 2-ST-3,81 | | | |
| 13 | 9.1190.5023.0 | 1 | Antenna | Single Band 2,4 WiFi RP-SMA-Male | | |



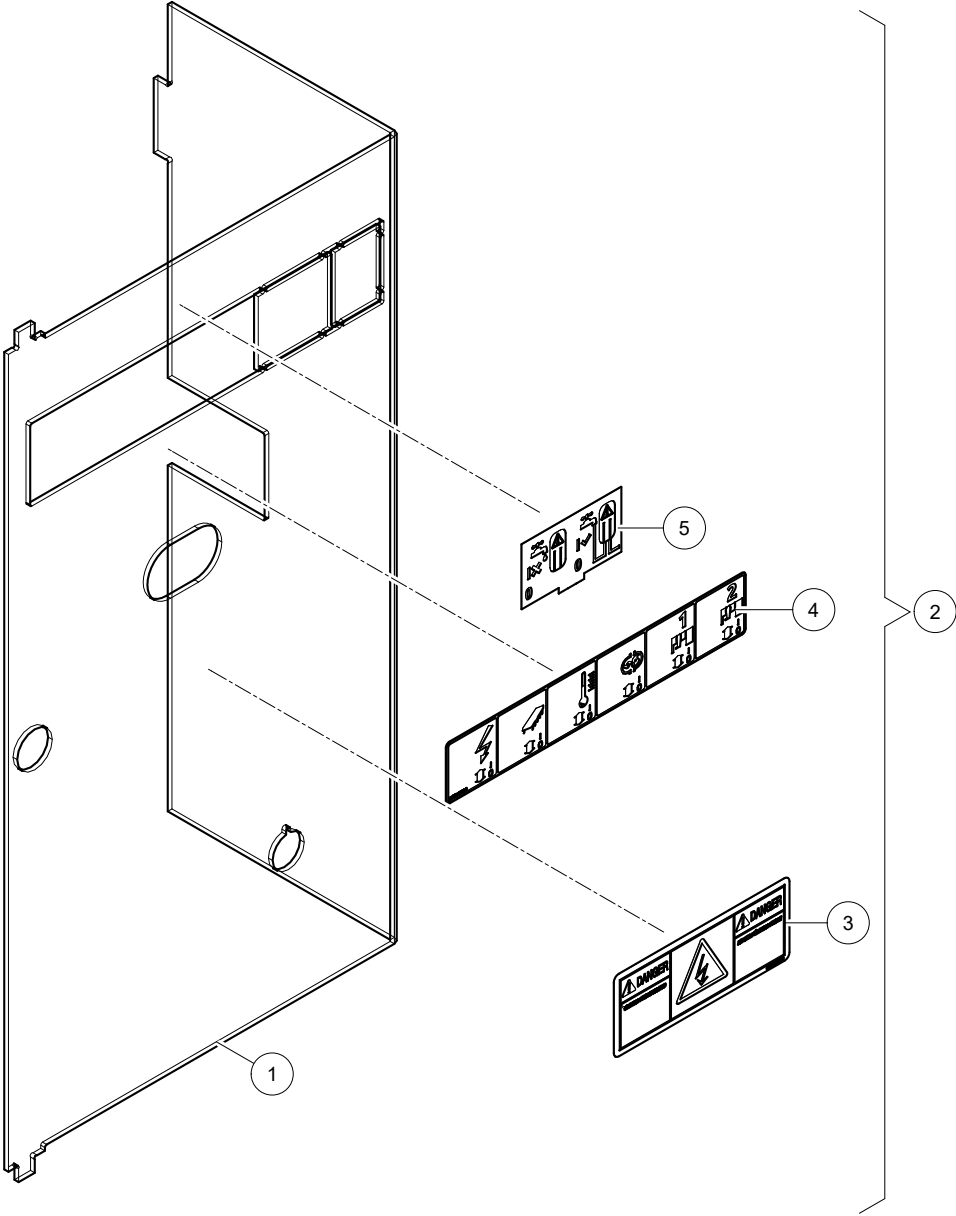


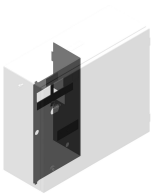
Astronaut Central
UnitCentral Control
Box

5.1005.2XXX-XXX

0003310703

| Ref. | Part No | Qty. | Description | Techn. info | Criticality | Remark |
|------|---------------|------|-------------------|--------------------|-------------|--------|
| 1 | 9.1029.0026.4 | 4 | Nut | M6 DIN934-A2-2 s/s | | |
| 2 | 9.1029.0042.6 | 8 | Nut | M5 DIN934-A2-2 s/s | | |
| 3 | 9.1030.0020.4 | 3 | Nut | M8 DIN985-A2-2 s/s | | |
| 4 | 9.1030.0021.5 | 1 | Nut | M6 DIN985-A2-2 s/s | | |
| 5 | ##### | 2 | Not separately | | | |
| 6 | 9.1039.0042.0 | 1 | Key | | | |
| 7 | 9.1048.0050.2 | 3 | Washer | A8.4 DIN125-A2 s/s | | |
| 8 | 9.1051.0006.4 | 9 | Serr. lock washer | A6.4 DIN6798 s/s | | |
| 9 | 9.1060.0044.5 | 8 | Screw | M5x10 s/s | | |
| 10 | ##### | 1 | Not separately | | | |
| 11 | ##### | 2 | Not separately | | | |
| 12 | ##### | 4 | Not separately | | | |
| 13 | ##### | 4 | Not separately | | | |
| 14 | 9.1185.0800.1 | 2 | Hinge | | | |
| 15 | 9.1186.0244.2 | 7 | Swivel | M12x1.5 | | |
| 16 | 9.1186.0245.3 | 7 | Swivel nut | M12X1.5 (EMC) | | |
| 17 | 9.1186.0246.4 | 8 | Cable gland | | | |
| 18 | 9.1186.0247.5 | 11 | Cable gland nut | | | |
| 19 | 9.1186.0248.6 | 2 | Cable gland | M20x1.5 | | |
| 20 | 9.1186.0249.0 | 4 | Swivel nut | M20x1.5 | | |
| 21 | 9.1186.0250.1 | 2 | Swivel | M25x1.5 | | |
| 22 | 9.1186.0251.2 | 2 | Lock nut | M25x1.5 | | |
| 23 | ##### | 2 | Not separately | | | |
| 24 | 9.1186.0814.0 | 3 | Blind Swivel | M16 | | |
| 25 | 9.1186.1171.0 | 1 | Seal | 2X5-6 GR | | |
| 26 | 9.1186.1172.0 | 1 | Seal | 3X5 GR | | |
| 27 | 9.1186.1173.0 | 1 | Sealing plug | 5mm | | |





Astronaut Central Unit

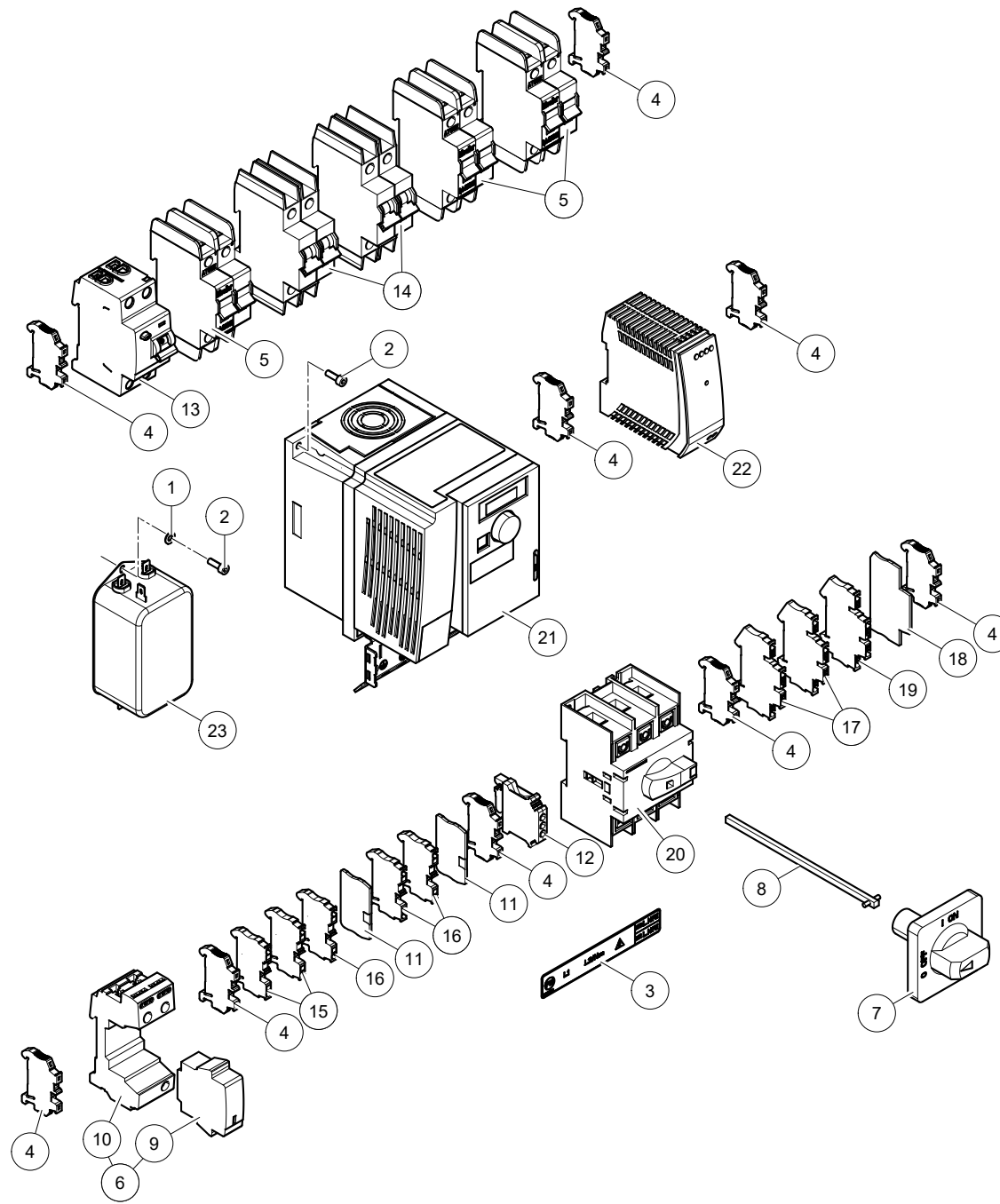
Central Control Box

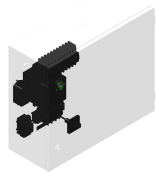
5.1005.2XXX-XXX

0003310703

| Ref. | Part No | Qty. | Description | Techn. info | Criticality | Remark |
|------|---------------|------|----------------|------------------------|-------------|--------|
| 1 | ##### | 1 | Not separately | | | |
| 2 | 5.1005.5612.0 | 1 | Cover | High Voltage (NA / UK) | | |
| 3 | 9.1170.0583.0 | 1 | Decal | "Electrocution hazard" | | |
| 4 | 9.1170.0998.0 | 1 | Etiket | | | |
| 5 | 9.1170.1813.0 | 1 | Etiket | | | |



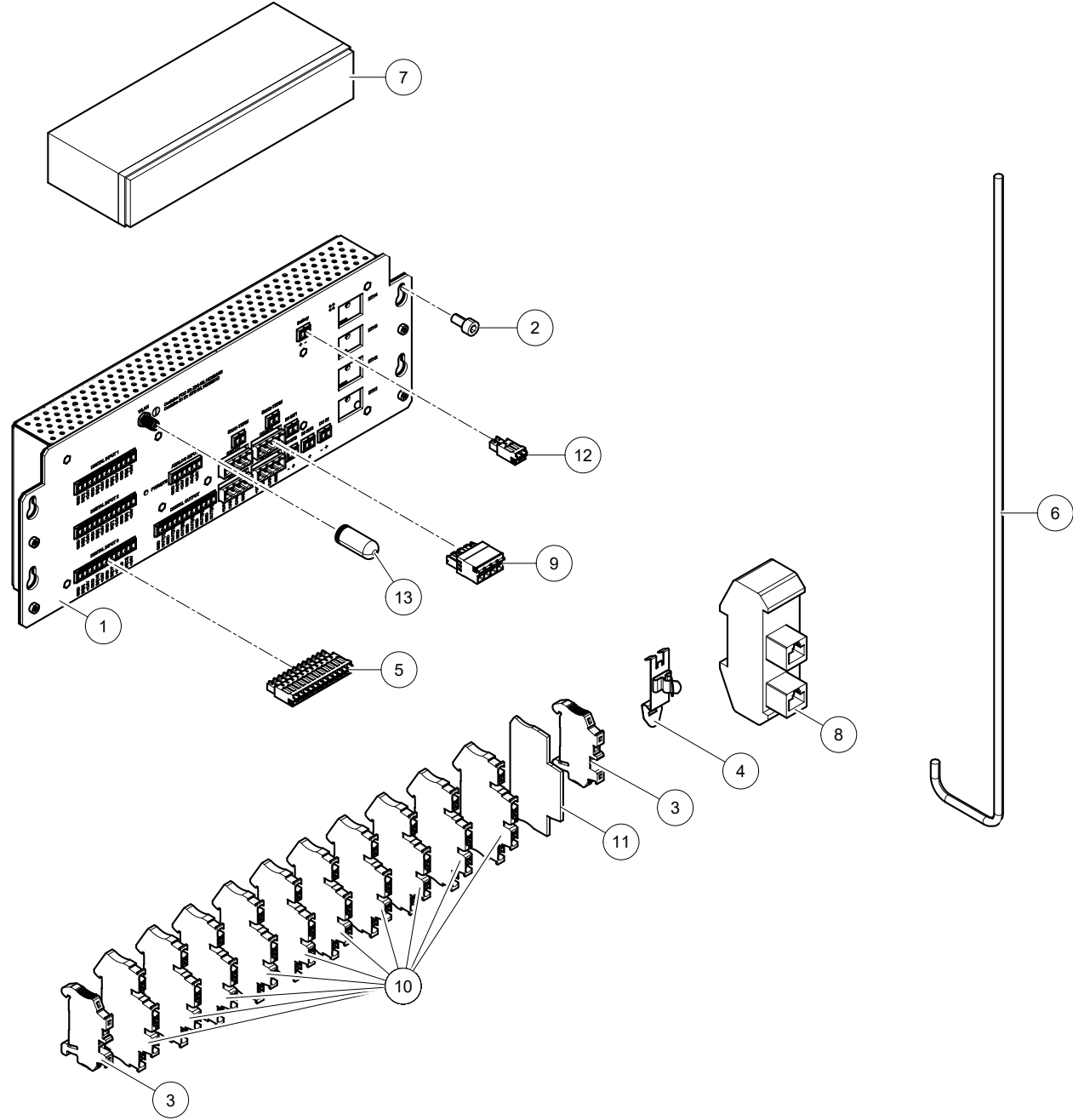


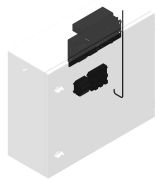
Astronaut Central
UnitCentral Control
Box

5.1005.2XXX-XXX

0003310703

| Ref. | Part No | Qty. | Description | Techn. info | Criticality | Remark |
|------|---------------|------|---------------------------|----------------------------|-------------|--------|
| 1 | 9.1048.0089.6 | 2 | Washer | A4.3 DIN125-A2 s/s | | |
| 2 | 9.1057.0160.5 | 4 | Screw | M4x12 DIN912 s/s | | |
| 3 | ##### | 1 | Not separately | | | |
| 4 | 9.1185.0840.6 | 9 | End bracket | | | |
| 5 | 9.1185.0904.0 | 3 | Fuse holder | Fuse x-pole FAZ-C10/2-NA | | |
| 6 | ##### | 1 | Not separately | | | |
| 7 | 9.1186.1070.0 | 1 | Switch | With guide pin | | |
| 8 | 9.1186.1073.0 | 1 | Shaft (150mm) | | | |
| 9 | 9.1186.1101.0 | 2 | Relay | CARDRIDGE 320/40kA | | |
| 10 | ##### | 1 | Not separately | | | |
| 11 | ##### | 2 | Not separately | | | |
| 12 | ##### | 1 | Not separately | | | |
| 13 | ##### | 1 | Not separately | | | |
| 14 | ##### | 2 | Not separately | | | |
| 15 | 9.1190.2066.0 | 2 | Terminal PT 2,5 | | | |
| 16 | 9.1190.2069.0 | 3 | Terminal PT 2,5-PE | | | |
| 17 | 9.1190.2154.0 | 2 | Terminal | | | |
| 18 | ##### | 1 | Not separately | D-PTTB 2 | | |
| 19 | 9.1190.2159.0 | 1 | Protective terminal block | Double level - PTTB 2,5-PE | | |
| 20 | 9.1190.6032.0 | 1 | Switch | VLS3P030R2 | | |
| 21 | 9.1190.7814.0 | 1 | Electrical control | ATV320U15M2C | | |
| 22 | 9.1190.8001.0 | 1 | Power source | UNO_PS_1AC_24DC_60W | | |
| 23 | 9.1190.9706.0 | 1 | Electronics | EMI FILTER | | |

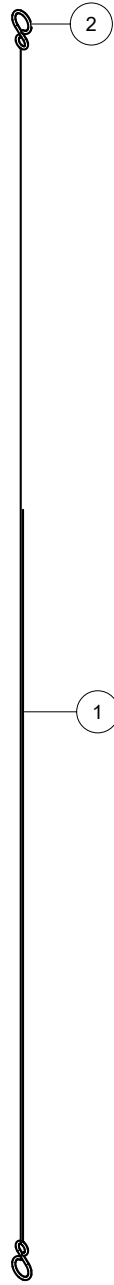


Astronaut Central
UnitCentral Control
Box

5.1005.2XXX-XXX

0003310703

| Ref. | Part No | Qty. | Description | Techn. info | Criticality | Remark |
|------|---------------|------|-------------------------------|----------------------------------|-------------|--------|
| 1 | 6.2001.0282.0 | 1 | Control box | CRS M3 | | |
| 2 | 9.1057.0053.3 | 4 | S.h. bolt | M5x10 DIN912 s/s | | |
| 3 | 9.1185.0840.6 | 2 | End bracket | | | |
| 4 | ##### | 1 | Not separately | | | |
| 5 | 9.1186.0709.0 | 3 | Connector | 8 pole | | |
| 6 | 9.1190.0026.0 | 3 | Patch cable | RJ45 cat5e UTP 0.5m | | |
| 7 | 9.1190.0048.0 | 1 | Battery | | | |
| 8 | 9.1190.0452.0 | 3 | Connection Module | Type 2, RJ45 | | |
| 9 | 9.1190.0817.0 | 1 | Connector FKCN 2,5/ 4-ST-5,08 | | | |
| 10 | 9.1190.2154.0 | 10 | Terminal | | | |
| 11 | ##### | 1 | Not separately | D-PTTB 2 | | |
| 12 | 9.1190.2222.0 | 5 | Connector FMC 1,5/ 2-ST-3,81 | | | |
| 13 | 9.1190.5023.0 | 1 | Antenna | Single Band 2,4 WiFi RP-SMA-Male | | |



Astronaut Central Unit Central Control Box 5.1005.2XXX-XXX 0003310703

| Ref. | Part No | Qty. | Description | Techn. info | Criticality | Remark |
|------|---------------|------|-------------|-------------------------|-------------|--------|
| 1 | 9.1144.0072.0 | 1 | Chain | KEY HOLDER CHAIN 900 MM | | |
| 2 | 9.1147.0009.2 | 2 | S-hook | | | |





INTENTIONALLY BLANK

Lely Industries N.V.

Cornelis van der Lelylaan 1

NL-3147 PB Maassluis

Tel +31 (0)88 - 12 28 221

Fax +31 (0)88 - 12 28 222

